



PROJECT		REF		REV	ITEM CODE	
LOCATION		DATE			PAGE	

SANITARY WARE SPECIFICATION SHEET

<p>Item Descriptions</p> <p>American Standard (Thailand) "City" Vitreous china solid back-to-wall double vortex washdown watercloset with soft-closing seat & cover; Aqua Ceramic & ComfortClean Technology</p> <p>Dimensions</p> <p>L706 x W510 x H1000 mm</p> <p>Model</p> <p>CL3229B-6DAYB1</p> <p>Material/Colour</p> <p>Vitreous China / White (Water Closet)</p> <p>Manufacturer</p> <p>American Standard (Thailand)</p> <p>Source</p> <p>Acme Sanitary Ware Co. Ltd Mr. Eric Wong/ Mr. Don Yuen</p> <p>Contact Tel/Fax</p> <p>(852) 2388-7171 / (852) 2710-8012</p> <p>E-mail</p> <p>acme@acmesanitary.com.hk</p> <p>Website</p> <p>www.acmesanitary.com.hk</p>	<p>Illustration/ Drawing</p>																
<ul style="list-style-type: none"> • Double Vortex Maximum flushing performance, minimum water usage. • Aqua Ceramic Super hydrophilic technology prevents dirt and dark ring stains from sticking to ceramic surface. • Power Rim 360 degrees clean in the rim for effective removal of dirt and stains. • Crystasleek Sleek, slim and durable seat and cover for a timeless style. • Easy Release Easy removal for thorough cleaning. • Skirted Design Premium design allows for quick and easy exterior cleaning. • Comfort Clean Easy-access, waterproof remote switch that is mountable anywhere in the shower, allowing user to change shower function with a simple click. 	<p>Product Specification</p> <table border="1"> <tr> <td>Standard :</td> <td>TIS 792 - 2554</td> </tr> <tr> <td>Product Type :</td> <td>Back To Wall (BTW)</td> </tr> <tr> <td>Bowl Shape :</td> <td>Elongated</td> </tr> <tr> <td>Size:</td> <td>W510 x L706 x H1000 mm.</td> </tr> <tr> <td>Outlet :</td> <td>S-trap rough-in 305 mm.</td> </tr> <tr> <td>Flush System :</td> <td>Double Vortex / Washdown</td> </tr> <tr> <td>Water Consumption :</td> <td>3/4.5 Lpf</td> </tr> <tr> <td>N.W. / G.W. :</td> <td>54.80 kgs. / 57.00 kgs.</td> </tr> </table>	Standard :	TIS 792 - 2554	Product Type :	Back To Wall (BTW)	Bowl Shape :	Elongated	Size:	W510 x L706 x H1000 mm.	Outlet :	S-trap rough-in 305 mm.	Flush System :	Double Vortex / Washdown	Water Consumption :	3/4.5 Lpf	N.W. / G.W. :	54.80 kgs. / 57.00 kgs.
Standard :	TIS 792 - 2554																
Product Type :	Back To Wall (BTW)																
Bowl Shape :	Elongated																
Size:	W510 x L706 x H1000 mm.																
Outlet :	S-trap rough-in 305 mm.																
Flush System :	Double Vortex / Washdown																
Water Consumption :	3/4.5 Lpf																
N.W. / G.W. :	54.80 kgs. / 57.00 kgs.																



Note: Equivalent to 3229YB1-WT-0

* All information of the above is for the reference only. No prior notice is made if any changes.



MAXIMUM FLUSHING PERFORMANCE, MINIMUM WATER USAGE

The design of the bowl propels the water forward and creates a strong flushing momentum.



Momentum and power are created by the design of the bowl and force of the water.



100% of the water is ejected through two water openings.



RIMLESS

HYGIENIC AND EASY TO CLEAN

Double Vortex is a rimless flushing system that effectively cleans the entire bowl interior, preventing dirt and deposits from building up. This rimless design makes it easy to clean as no dirt can accumulate over time.



The resulting 'vortex' of water cleans the entire surface of the bowl.



All water flows out from the top of the bowl, cleaning the inner surface of the bowl.



Experience Double Vortex Here



ANTI-STAIN TECHNOLOGY



AQUA CERAMIC



GOOD DESIGN AWARD 2016

Less Dirt Stains. Less Water Stains.

This award-winning super-hydrophilic technology prevents dirt and dark ring stains from sticking to ceramic surfaces. In fact, dirt glides off the surface effortlessly as Aqua Ceramic enables water to penetrate between the contaminants and the toilet surface, effectively lifting off that waste with every flush.

AQUA CERAMIC is the first material in the world that is able to address the four main issues that affect the cleanliness of toilets: scuffing and scratching, marks from waste, stains caused by prolonged exposure to hard water, and the build-up of bacteria.

The technology incorporates super-hydrophilic performance in the surface of the ceramic, which permits the rinse water to permeate beneath any waste that may have become attached to the ceramic. And as the stain relinquishes its hold, the water simply lifts it and flushes it away.





ComfortClean

Effectively kills E.Coli bacteria according to tests done with the Industrial Microbiological Service Ltd (IMSL).



COMFORTCLEAN

Effectively kills E. Coli bacteria according to tests done with IMSL.

ComfortClean Antibacterial Glaze

China Glaze

Ceramic Ware



ComfortClean Antibacterial Technology

Long-lasting Protection Against Bacteria and Germs.

American Standard ComfortClean technology: A revolutionary ceramic glaze with zinc oxide that effectively kills E. coli bacteria inside the toilet bowl for the long term and beyond, as proven in tests conducted by Industrial Microbiological Services Limited (IMSL).



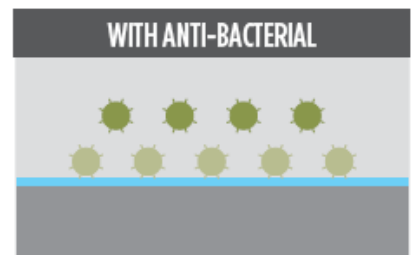
ANTI-BACTERIAL FINISH

TOTAL HYGIENE PROTECTION

American Standard's anti-bacterial finish covers all essential touch points, including the push button, seat and cover to provide an ultimate hygienic environment.



Over time, bacteria breeds on a conventional toilet's surface.



With Anti-bacterial finish, it effectively inhibits the growth of bacteria.

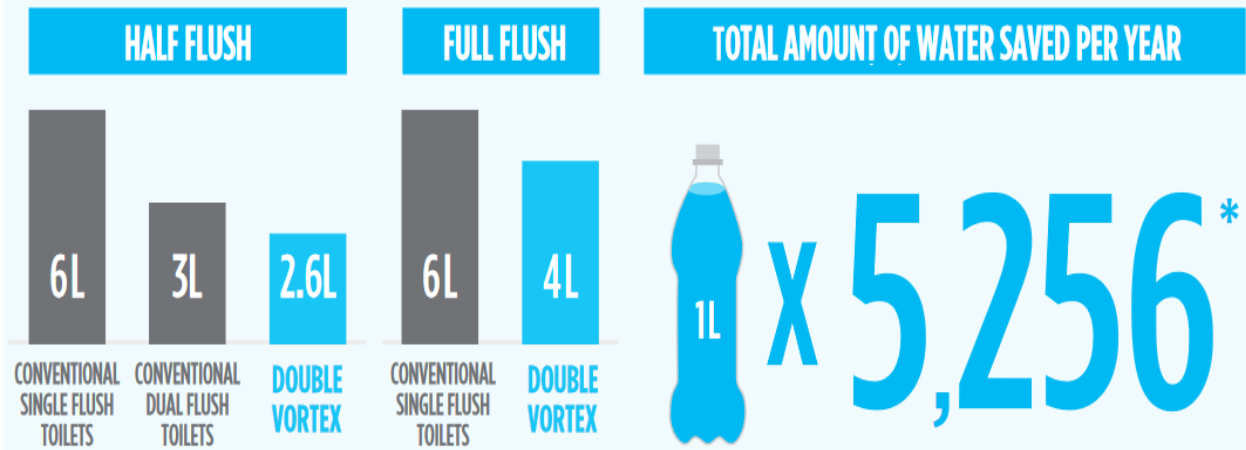
Antimicrobial test result example (24 hours later)



*Japan Industrial Standard (JIS Z 2801:2010) is the standard established by Japan Industrial Standard to test for anti-bacterial activity and efficacy.



American Standard is the first in the industry to meet the *Japan Industrial Standard (JIS Z 2801:2010) for this anti-bacterial technology on the push button. This technology is also applied on the seat and cover to provide a more hygienic environment.



LIXIL

Link to Good Living

About LIXIL

LIXIL is the most comprehensive and connected global company in the housing and building industry, delivering human-centric innovation that enhances people's living spaces – we call this Living Technology.

Delivering core strengths in water, housing, building and kitchen technologies, our brand portfolio businesses including LIXIL, INAX, GROHE, American Standard Brands and Permasteelisa are leaders in the industries and regions in which they operate, bringing better living solutions to the world today and for future generations.



The anti-bacterial innovation is applied as a glaze on ceramic wares, and is certified by the Industrial Microbiological Service Ltd (IMSL) in UK. The anti-bacterial feature cannot be removed even by household detergents, providing a lifetime of hygiene protection.

Good Design Award 2014

American Standard wins 2014 Good Design Award for its Acacia Evolution basin mixer.



GOOD DESIGN AWARD 2014

